

# MARINE GROWTH PREVENTION SYSTEM ELECTROLYTIC ANTI-FOULING

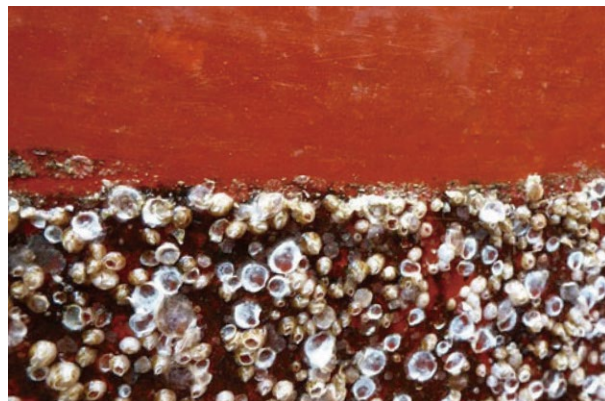


# Marine Growth Prevention System (Electrolytic Anti-fouling)

Ships use seawater for several purposes, and one of the primary functions is cooling the engine and parts of the ship while sailing. However, as the seawater passes through the various pipes and parts to cool the ship's engine, marine organisms could deposit along their surface.

To protect and purify the surface of ship's mechanical parts, our electrolytic anti-fouling anodes combo system function as both anti-fouling agent and corrosion inhibitor. The fouling organisms can be inhibited from growing by dosing small quantities of Cu ions into the water with a total anti-fouling effective rate over 95%. And aluminum hydroxide colloid formed could provide an anti-corrosive film over the sea water piping system - keeping corrosion rate less than 0.03 mm/year.

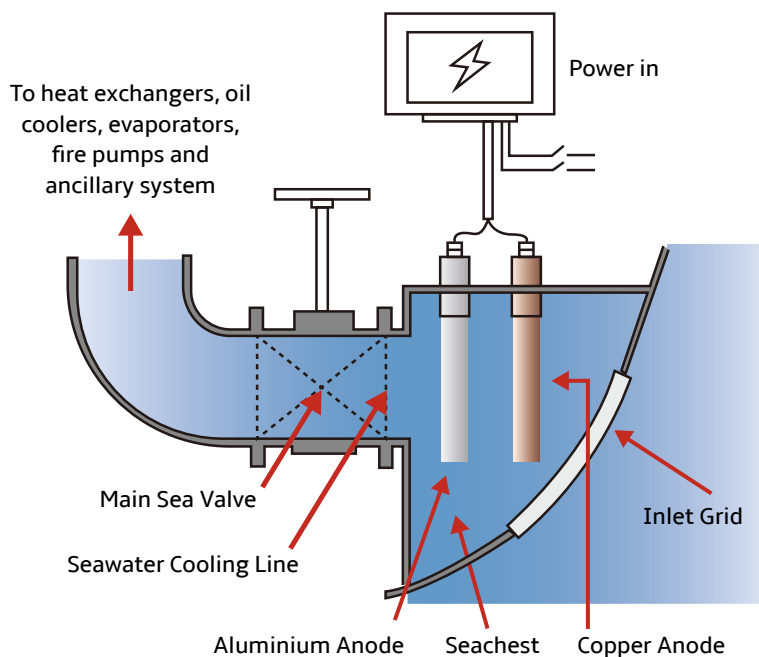
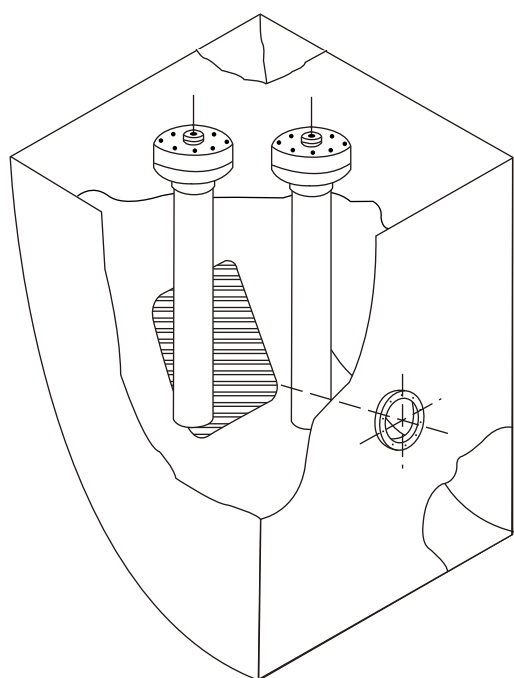
Our anti-fouling anodes can be installed using a number of mounting arrangements including steel flanges, steel sheath, steel sleeves, nylon mountings, cofferdams, etc.



BEFORE



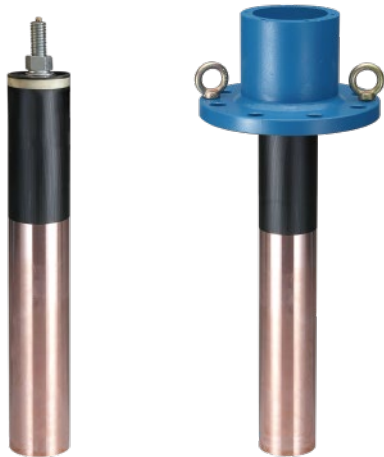
AFTER



# Marine Growth Prevention System (Electrolytic Anti-fouling)

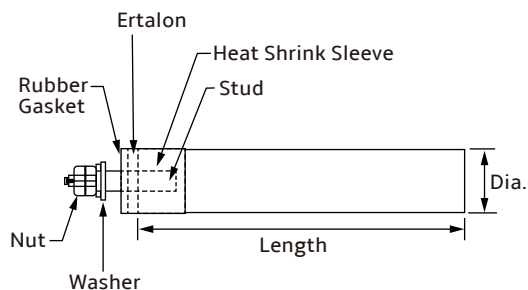
## ■ Copper Anode

Copper anode produces copper ions which are transported by the seawater and carried into the pipework system to prevent marine growth.



## ■ Aluminum Anode

Aluminum anode produces aluminum hydroxide which spread throughout the pipe work and produce an anti-corrosive layer on the internal surface of sea water cooling lines.



The size (diameter and length) of the anodes is determined based on seawater velocity (inlet water debit), design life and consideration of the maintenance or dry docking schedule for the vessels. Standard sizes range from 50mm to 150mm in diameter and 100mm to 2,000mm length.



# Marine Growth Prevention System (Electrolytic Anti-fouling)

## ■ Control Panel

Each unit supplies two group of anodes. PLC integrated displays each anode current and system operation status, and setting parameters. This allows visual monitoring of all working status of each anode.

### FUNCTIONS

- Manual or automatic switching
- Green "Power ON" LED indicator
- Red LED and onscreen warning indication for anode failure

| Technical Measurement      | Performance        |
|----------------------------|--------------------|
| Dimensions                 | 425x350x200mm      |
| Power Source               | 110V/220V, 50-60hz |
| Output Voltage (per anode) | DC 0~12V           |
| Output Current (per anode) | 0~2A               |
| IP Rating                  | IP44               |







## Industrial Corrosion Control Solutions Provider

Established in 2003, YUXI has over a 20-year heritage of innovation in corrosion control science and technology. We're a spirited team of ambitious thinkers and pioneer sheeps with a common goal in mind: protect our clients' assets from corrosion with cost-saving measures.

We have the most comprehensive catalog of cathodic protection materials including anodes, transformer rectifiers, backfills, coatings, etc. Our anodes and supplies are manufactured to strict quality standards through an ISO 9001 quality management system and are guaranteed to offer excellent performance in the industry.



Go to Our Web



Follow Us on LinkedIn



[www.yuxi-anode.com](http://www.yuxi-anode.com)

6/F, Tianlu Building, 767 Liangzhu Road,  
Ningbo 315000, P.R. China

**E-mail:** [info@yuxi-anode.com](mailto:info@yuxi-anode.com)

**Tel:** +86 (574) 83882233

**Fax:** +86 (574) 83882238