



ELASTOMERIC SPRAY-ON POLYUREA COATING FOR WATERPROOFING & ANTI-CORROSION

P-120



www.yuxi-anode.com

Elastomeric Spray-on Polyurea Coating for Waterproofing and Anti-corrosion

P-120

YUXI's P-120 spray-applied polyurea coating is a two-component, fast-setting, highly elastic coating composed of isocyanate prepolymer, polyether amines, and amine chain extenders. It produces a highly durable anticorrosive, waterproofing membrane with strong adhesion to many types of surfaces, providing long lasting protection of construction in industrial and high-end commercial facilities.

ADVANTAGES

- Consecutive and seamless coating film
- High tensile and tear strength
- High-performance water insulation capability
- Excellent resistance against chemical corrosion
- Superior hardness enables surfaces to resist impact, abrasion, scratches, etc.
- Good elasticity: the film remains elastic even down to -40°C
- Fast setting for spraying on horizontal, vertical, and overhead surfaces without dripping
- Excellent hybrid spraying characteristics allows for easy application
- Exceptional durability and longevity

FIELD OF USE

YUXI's polyurea coating can be successfully applied on the substrates in the following :

- Cementitious substrates, such as concrete surface, cement board, mortar, etc.
- Plaster structure, such as gypsum board or similar surface
- High porous substrates, such as brick, marble and natural stones
- Non-porous substrates, such as ceramic tiles or other masonry structure
- Ferrous metal surface, such as steel, cast iron, galvanized steel, stainless steel, etc.
- Non-ferrous metal surface, such as aluminum alloy, copper, bronze, tin, etc.
- Wooden surfaces, such as parquet floor or otherwise
- Impervious substrates, such as plastic, glass, etc.

* For application to other substrates or scopes of use, please contact our technician for further information.

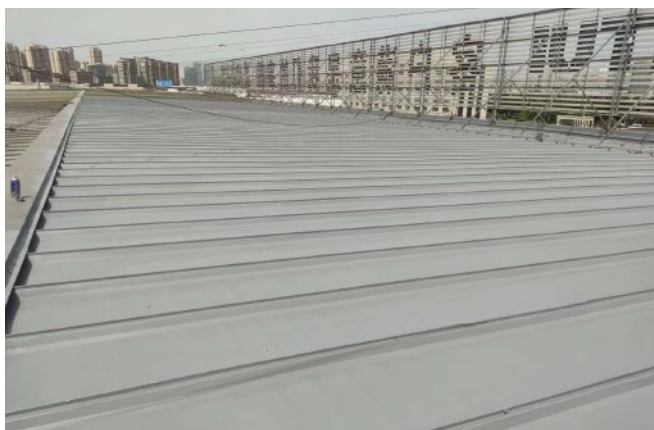


Elastomeric Spray-on Polyurea Coating for Waterproofing and Anti-corrosion

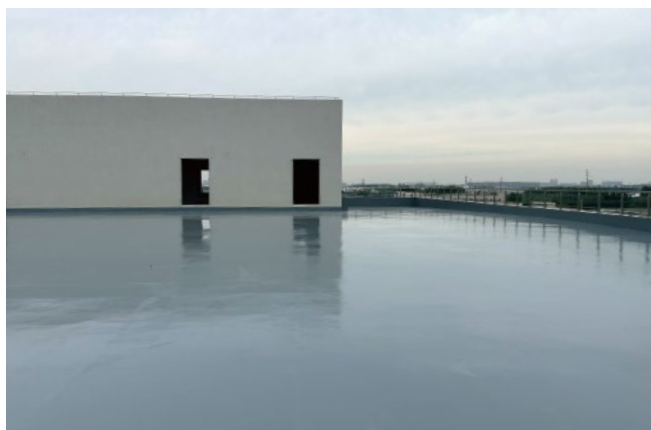
P-120

PRACTICAL APPLICATION

YUXI's P-120 polyurea coating is a hot spraying topcoat used in a large number of waterproofing and protection applications. It is ideal for use over new or existing structures.



Waterproofing of flat, sloped or inverted roof



Waterproofing of balcony, terrace, and veranda



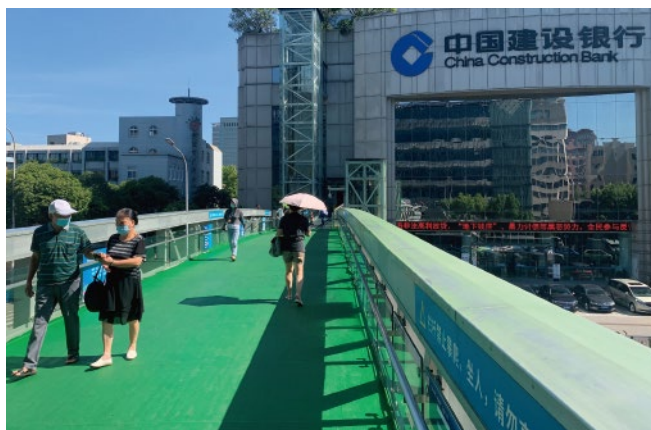
Waterproofing of pond, basin, aquariums and hydraulic structures in general



Protection of interior or exterior wall, slab and foundation



Protection of outdoor or indoor floors in parking garages and heavy traffic areas



Protection of bridge deck and areas subject to high mechanical or chemical loads



Elastomeric Spray-on Polyurea Coating for Waterproofing and Anti-corrosion

P-120

TECHNICAL CHARACTERISTICS

■ Component Properties

	Component A	Component B
Type	Base	Hardener
Composition	Isocyanate Prepolymer	Polyether Amines
Consistency	Liquid	Fluid
Color	Yellowish	Grey, Ivory, Green
Weight	220 kg	210 kg
Packaging	Metal Barrel	Metal Barrel

* Other RAL colors are available on request.



■ Physical Properties

The parameters are given under specific test conditions in accordance with the requirements specified in the GB/T 23446-2009 standards.

Technical Measurement	Performance
Tensile Strength	22.42 MPa
Elongation at Break	461%
Tear Strength	78 N/mm
Hardness (Shore A)	91
Abrasion Resistance (Taber Test)	7 mg (750g load / 500r)
Impact Resistance	1 kg/m
Flexibility	No Cracking (@-40°C)
Bond Strength	≥ 2.5 MPa
Water Absorption	2.7%
Water Permeability	Impermeable (0.4 MPa, 2 hrs.)
Thermal Aging	No Cracking

■ Chemical Properties

The results are performed under lab controllable conditions. These values may vary based on the application, climatology, or substrate conditions.

Technical Measurement	Performance
A/B Ratio (by volume)	1:1
Solids Content	99.6%
VOC Content	20 g/L
Theoretical Coverage	1.08 kg/m ² (at 1mm dry film thick)
Dry Film Thickness (DFT)*	1.5~2 mm
Gel Time	27 seconds
Tack-free Time	35 seconds

*Actual required DFT may vary in certain applications, please contact us for technical clarification.

Notice: The technical data contained herein are true and accurate to the best of our knowledge. Published technical data are subject to change without prior notice. Test report issued by the third-party accredited laboratory is available upon request.



Elastomeric Spray-on Polyurea Coating for Waterproofing and Anti-corrosion

P-120

APPLICATION INSTRUCTIONS

■ Surface Preparation

All surfaces should be prepared accordingly depending on the type of substrate, for example by brushing, rubbing, sand blasting, shot blasting, scarifying, bush hammering. For optimum adhesion, the substrate must be sound, dry and clean. Remove all loose materials and contaminants, such as dirt, dust, debris, rust, grease, oil, wax, etc.

■ Priming

The substrate must be treated with suitable prime. If needed, mid coat can be applied.

■ Mixing

Thoroughly premix component B prior to use. Then mix component A with the component B in the indicated mixing ratio till homogenous mixture is obtained. Do not add solvents or thinners.

■ Equipment

Our polyurea coating should be sprayed using a regulated high-pressure, high-temperature two-component airless spray rig. All tools should be cleaned immediately after use.

STORAGE

Store the product in a dry, ventilated, covered area at temperatures between 10°C and 40°C. Protect from heat, frost and direct sunlight. The shelf life is 12 months from the date of production under suitable storage conditions in its original sealed packing. Once open, use it immediately. Opened containers can be resealed, but the material shelf life will ultimately shorten.

SAFETY PRECAUTIONS

Carefully read and follow all instructions on the safe handling and disposal of chemical products.

- **Warning:** This product contains isocyanate MDI, which may cause skin irritation and inhalation can be toxic. Avoid contact with eyes and skin.
- **Eye protection:** Wear safety goggles to prevent splashing and exposure to particles in the air. In case of contact with eyes, rinse immediately with plenty of water and seek medical advice.
- **Skin protection:** Wear suitable protective clothing and gloves. In case of skin contact, wash with thoroughly soap and plenty of water. Get medical attention if irritation develops or persists.
- **Respiratory protection:** Adequate ventilation of the working area is recommended. When spraying, use a air-purifying respirator to protect the respiratory tract.
- **Fire prevention:** This product is flammable. In case of fire, blanket flames with foam, carbon dioxide or dry chemicals.
- **Waste disposal:** The product is hazardous for aquatic life, do not dispose of the product down the drain. Follow and observe any applicable local or national laws and regulations.

For further and complete information about the safe use of our product, please refer to the latest version of our Material Safety Datas Sheet (MSDS).





E-mail: info@yuxi-anode.com Tel: +86 (574) 83882233
5/F, Building 4, 1819 Yongmao East Road, Ningbo 315201, China

www.yuxi-anode.com



Go to Our Web



Follow Us on LinkedIn